

TOPIC 4 CLIMATES OF THE WORLD



Full name:

Date:

Class:

School:

Teacher:

Contents:

- 1.- Climate graph
- 2.- Hot climates.
 - 2.1 Equatorial climate.
 - 2.2 Tropical climate.
 - 2.3 Desert climate.
- 3.- Mild climates.
 - 3.1 Oceanic or Atlantic climate.
 - 3.2 Continental climate.
 - 3.3 Mediterranean climate.
- 4.- Cold climate.
 - 4.1 Polar climate
 - 4.2 High mountainous climate

VOCABULARY



A

B

- bears:
- Between: entre
- Below: por debajo de

C

Can: poder

D

- deer
- Dry: seco/a

E

F

- forest: bosque

G

- Grassland:hierba
- Goat:cabra

H

- heavy: abundante
- high: alto/a
- (The) highest: las más altas.
- holm oaks: encinas
- hot: caluroso/a
- humid: húmedo

I

J

K

L

- Landscape: paisaje
- Liche: liche
- like: como
- Located in: situado en
- (The) lowest: las más bajas

M

- mild: suave
- moss: musgo

N

O

- oaks: robles
- occur: suceder
- only: solamente

P

- penguin: pingüino
- Population: población

R

- Rainfall: precipitación
- rainy: lluvioso
- rainforest: selva, jungle
- reptile: reptil
- river: río
- rocky: rocoso

S

- sandy: arenoso
- savannah: sabana
- scrubland:matorral
- seals: focas
- season: estación
- snake: serpiente.

T

- Taiga: bosque climas fríos
- that: que
- there is: hay (singular)
- there are: hay (plural)
- tundra: tundra

U

- unpopulated: despoblados
- usually: normalmente

V

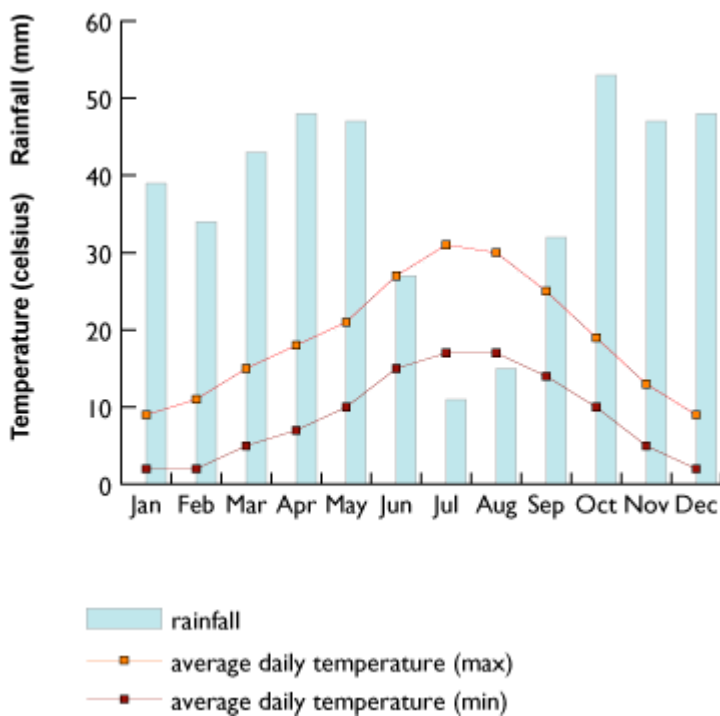
- valley: valle
- very: muy

W

- wet: húmedo
- while: mientras que
- wolves: lobos

1.- THE CLIMATE GRAPH.

We use climate graphs to represent the annual variation of temperature and rainfall at a particular place.



This climate graph shows the annual evolution of temperature and rainfall in Madrid.

We can see that most rainfall occurs in Autumn and Spring.

Winter is cold **while** summer is hot. The highest temperatures occur in July and August **while** the lowest temperatures occur in December, January and February.

The climate graph indicates that Madrid has got a continental climate.

2.- HOT CLIMATES

Hot climates are located between the Tropics of Cancer and Capricorn. Temperatures are usually very high. There are three subtypes: the **equatorial** climate, the **tropical** climate and the **desert** climate.

2.1 The equatorial climate.

The equatorial climate is hot and humid. It has got abundant precipitation.

Vegetation includes dense rainforests or jungles.

Fauna includes monkeys, snakes and insects.

Human population is low.



2.2 The tropical climate

The equatorial climate has got a dry season and a rainy season. Tropical areas are hot and wet.

Vegetation includes the tropical savannah.

Fauna includes animals like giraffes and zebras.

Human population occurs in valleys and rivers



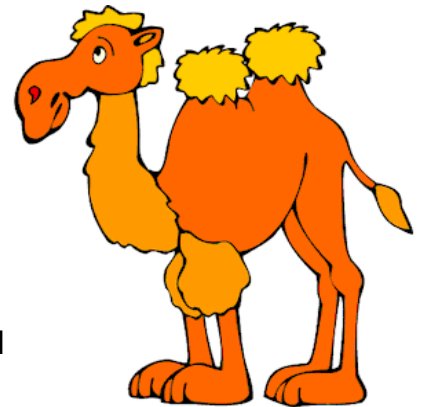
2.3 The desert climate

The desert climate has got hot temperatures and little precipitation. Deserts areas are dry Some desserts are sandy. Others are rocky.

Vegetation is scarce. There are only some plants around oases.

Fauna includes animals like reptiles, camels, insects and birds.

Human population is really low. Deserts are usually unpopulated



3.- MILD CLIMATES

Mild climates are located between the tropics and the polar circles. They are four seasons: spring, summer, autumn and winter.

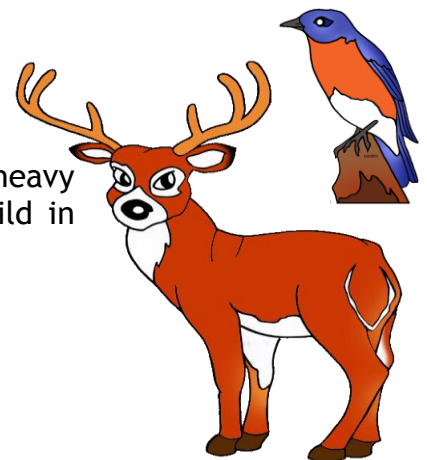
3.1 Oceanic or Atlantic climate

Oceanic or Atlantic climate has got mild temperatures and heavy rainfall (abundant precipitation). It is cool in winter and mild in summer.

Vegetation includes fields and forests of oaks.

Fauna includes deer, bears, wolves, insects and birds.

Human population is high.



3.2 Continental climate

This climate has got cold and snowy winters and warm and stormy summers. Precipitation is irregular

Vegetation includes Taiga, a forest of coniferous trees.

Fauna includes deer and bears.

Human population is very dense.



3.3 Mediterranean climate.

This climate has got mild and wet winters. Summers are hot and dry. Most rainfall occurs in spring and autumn.

Vegetation includes Holm oaks and scrubland.

Fauna includes animals like reptiles and birds.

Human population is very dense. People live on agriculture and fishing.



4.- COLD CLIMATES

Cold climates are located above the polar circles and in high mountains.

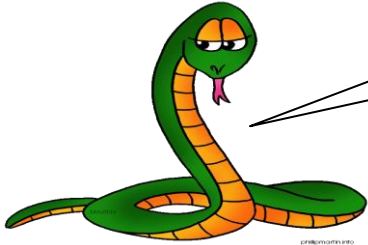
4.1 Polar climate

The Poles have got very low temperatures, usually below 0°C. Summer doesn't exist. It rarely rains. **Flora** includes tundra while **fauna** includes seals and penguins. **Human population** is low.



4.2 High mountainous climate.

High mountains have got cold temperatures. Precipitation is in the form of rain and snow. **Flora** includes moss, liche forests, grassland while **fauna** includes goats and birds. **Human population** is low.



Activity 1. Read again the unit and help me complete the chart.

CLIMATES OF THE WORLD

COLD CLIMATE

desert climate

d	e	e	r	o	i	l	s	v	a
g	l	c	i	l	t	y	t	d	b
s	s	l	a	b	i	n	c	f	s
z	d	I	l	e	s	c	e	g	h
m	n	r	a	a	i	f	s	p	a
l	y	a	i	r	f	e	n	l	s
c	k	f	y	b	I	I	i	f	t
x	e	e	b	w	o	l	f	t	c
w	h	n	f	h	s	e	c	g	l
r	e	p	t	i	l	e	s	v	o

Activity 2. Find animals that live in warm or mild climates



philipmartin.com

Activity 3. Are these statements **TRUE** or **FALSE**. Correct the false ones.



1-There are big cities in polar areas. **TRUE/FALSE**

.....

2-The equatorial climate has got two dry seasons and a rainy season. **TRUE/FALSE**

.....

3-There are reptiles in zones with desert climates. **TRUE/FALSE**

.....

4-Madrid has got a Mediterranean climate. **TRUE/FALSE**

.....

5-Taiga is typical from continental climate. **TRUE/FALSE**

.....

6-Desert areas are only sandy. **TRUE/FALSE**

.....

7- There are only some plants in the ecuatorial climate. **TRUE/FALSE**

.....

8- Precipitation is only in form of rain in high mountains. **TRUE/FALSE**

.....

9- There aren't any penguins in polar climate. **TRUE/FALSE**

.....

10-Human population is low in continental areas **TRUE/FALSE**

.....

11- Summers are cold and dry in Mediterranean areas. **TRUE/FALSE**

.....



Activity 4.-
Answer these questions about the Spain's climate



1.- How many climates are there in Andalusia? What are their names?

.....

2.- Mention the regions affected by the Mediterranean climate?

.....

3.- How many climates has Catalonia got? What are their names?

.....

4.- Describe the temperatures, fauna and vegetation in the Balearic islands?

.....

5.- Galicia, Asturias, Cantabria and part of the Basque Country have got the same climate. What is its name? Describe the typical temperatures, fauna and vegetation of this area.

.....

6.-Mention the regions affected by the continental climate. Mention its principal characteristics.

.....